

Research Article

Discovery of a Novel Lineage *Burkholderia cepacia* ST 1870 Endophytically Isolated from Medicinal *Polygala paniculata* Which Shows Potent *In Vitro* Antileishmanial and Antimicrobial Effects

Felipe de Paula Nogueira Cruz ^{1,2,3}, Ailton Ferreira de Paula,¹ Camila Tita Nogueira ²,
Paulo Henrique Marques de Andrade,^{1,2} Leonardo Maurici Borges,⁴
Paulo Teixeira Lacava,^{1,3} Ilana Lopes Baratella da Cunha Camargo,⁵
Fernanda de Freitas Aníbal,^{2,3} and Cristina Paiva de Sousa^{1,3}

¹Laboratory of Microbiology and Biomolecules–LaMiB, Department of Morphology and Pathology, Federal University of São Carlos, São Carlos, Brazil

²Laboratory of Inflammation and Infectious Diseases–LIDI, Federal University of São Carlos, São Carlos, Brazil

³Biotechnology Graduate Program, Federal University of São Carlos, São Carlos, Brazil

⁴Laboratory of Taxonomy and Plant Evolution–TaxEP, Department of Botany, Federal University of São Carlos, São Carlos, Brazil

⁵Laboratory of Molecular Epidemiology and Microbiology, Physics Institute of Sao Carlos, University of Sao Paulo, São Carlos, Brazil

Correspondence should be addressed to Felipe de Paula Nogueira Cruz; depaula_fc@outlook.com

Received 15 November 2020; Accepted 29 January 2021; Published 17 February 2021

Academic Editor: Simona Nardoni

Copyright © 2021 Felipe de Paula Nogueira Cruz et al. This is an open access article distributed under the Creative Commons Attribution License, which permits unrestricted use, distribution, and reproduction in any medium, provided the original work is properly cited.

In this study, we report the isolation and identification of an endophytic strain of *Burkholderia cepacia* (COPS strain) associated with *Polygala paniculata* roots. *Polygala* plants are rich sources of promising microbiomes, of which the literature reports several pharmacological effects, such as trypanocidal, antinociceptive, anesthetic, anxiolytics, and anticonvulsant activities. *B. cepacia* COPS belongs to a new sequence type (ST 1870) and harbors a genome estimated in 8.3 Mbp which exhibits the aminoglycosides and beta-lactams resistance genes *aph(3′)-IIa* and *bla_{TEM-116}*, respectively. Analysis performed using MLST, average nucleotide identity, and digital DNA-DNA hybridization support its species-level identification and reveals its novel housekeeping genes alleles *gyrB*, *lepA*, and *phaC*. The root endophyte *B. cepacia* COPS drew our attention from a group of 14 bacterial isolates during the primary screening for being potentially active against *Staphylococcus aureus* ATCC 29213, *Enterococcus faecalis* ATCC 29212, *Micrococcus luteus* ATCC 9341, *Escherichia coli* ATCC 25922, and *Candida albicans* ATCC 10231 and exhibited the broad-spectrum activity against phytopathogenic fungi. In addition, COPS strain showed production of protease, lipase, and esterase in solid media, and its natural product extract showed potent inhibition against fungal plant pathogens, such as *Moniliophthora perniciosa*, whose antagonism index (89.32%) exceeded the positive control (74.17%), whereas *Sclerotinia sclerotiorum* and *Ceratocystis paradoxa* showed high percentages of inhibition (85.53% and 82.69%, respectively). COPS crude extract also significantly inhibited *S. epidermidis* ATCC 35984, *E. faecium* ATCC 700221 (MIC values of 32 µg/mL for both), *E. faecalis* ATCC 29212 (64 µg/mL), and *S. aureus* ATCC 25923 (128 µg/mL). We observed moderate antagonistic activity against *A. baumannii* ATCC 19606 and *E. coli* ATCC 25922 (both at 512 µg/mL), as well as potent cytotoxic effects on *Leishmania infantum* and *Leishmania major* promastigote forms with 78.25% and 57.30% inhibition. In conclusion, this study presents for the first time the isolation of an endophytic *B. cepacia* strain associated with *P. paniculata* and enough evidence that these plants may be considered a rich source of microbes for the fight against neglected diseases.

1. Introduction

Plant tissues represent a significant source of natural substances for pharmaceutical and biotechnological interest. Drug discovery has been based on medicinal plants for centuries [1–3]. However, endophytes are capable to biosynthesize a plethora of natural products and compounds which are originally believed to be produced only by their host plants [4, 5], and therefore, they are considered alternative suppliers of characteristic phytochemical compounds and represent a vast unexplored reservoir of unique chemical structures [6]. These plant-symbiont microorganisms that live in intimate interaction establish a mutualistic interaction with the host plant by exchanging nutrients and protection; they produce antibiotics and other substances that can protect the plant against stress conditions such as attack by herbivores, pests, and plant pathogens without causing apparent disease symptoms [7–9].

Polygala paniculata (commonly known as “mimosa,” “barba-de-bode,” “barba-de-São-João,” and “vassourinha branca”) is a medicinal plant that frequently grows on the Brazilian coast and is used in traditional medicine due to their analgesic properties and treatment of inflammatory diseases such as asthma, bronchitis, arthritis, and disorders of the kidney [10–12]. However, plants within this genus are well-known producers of a variety of phytochemical compounds [13], such as methyl salicylate, alkaloids [14], xanthones [15, 16], saponins [17, 18], coumarins [11, 19], and styrylpyrones [11]. Natural products extracted from *Polygala* species are widely studied [13], and numerous reports describe pharmacological effects for their crude extracts such as anti-inflammatory [20, 21], anxiolytic [22], antidepressant [11], trypanocidal [23], antinociceptive [24], neuroprotective [25, 26], antiatherosclerosis [27], antitumor [28, 29], and antifungal [30]. However, the potential of endophytes and rhizospheric-associated microorganisms within these plant genres remains unknown. Consequently, the exploitation of medicinal plants’ microbiome, which produces bioactive metabolites, is fundamental [31, 32].

The introduction of antibiotics enabled the development of therapies for previously incurable diseases. However, resistance to this class of medicines happens faster than the human capability of discovering new compounds and introducing them into clinical practice. Moreover, synthetic approaches to antibiotic production have not been effective enough to completely replace this platform [31, 33, 34].

Likewise, phytopathogenic fungi represent a severe threat to several crops, thus affecting production and quality. Modern agriculture is entirely dependent on agrochemicals; although they can improve crop yield, quality, and shelf-life, they negatively affect the environment and human health. In this regard, issues related to sustainability and practices in

defense of the environment have drawn considerable attention [35–37].

Approximately, 13 million people suffer from parasitic diseases caused by *Leishmania* protozoa infection. Parasite resistance and host toxicity of currently available drugs are a reality and a concern mainly in subtropical countries [38, 39]. On the other hand, microbial resistance to antibiotics has been rapidly spread, is responsible for 33,000 deaths in Europe, and became a concern to public health [40].

We aimed to explore the endophytes of *Polygala paniculata* and isolate antibiotic- and biotechnology-related enzymes-producing microorganisms. Herein, we present the *Burkholderia cepacia* COPS, a sequence-type (ST) 1870 strain isolated from *P. paniculata* roots collected in the Brazilian Atlantic Forest. In addition to its draft-genome, we presented the COPS enzymes and antimicrobial activities.

Burkholderia spp. consist of emerging sources of a plethora and diverse natural products potentially relevant for therapeutic/medicine, biotechnological, and agriculture applications [41]. This genus is a versatile producer of antimicrobial compounds and enzymes and exhibits plant growth-promoting properties. We can find such Gram-negative bacteria in several habitats, ranging from humans (as pathogens) to plants (as endophytes) [42–48].

Although widely used for bacterial systematics, the taxonomic identification by 16S rRNA coding gene among *Burkholderia cepacia* complex (Bcc) is limited and difficult [49–53]. According to Bach et al. [52], the identities of 16S rRNA and *recA* genes within Bcc can reach 100% and 95%, respectively. Several studies report the use of housekeeping genes established in multilocus sequence typing (MLST) to differentiate the Bcc species [54–61]. The multilocus sequence analysis (MLSA) of the housekeeping genes *atpD*, *gltB*, *gyrB*, *recA*, *lepA*, *phaC*, and *trpB* enable an accurate investigation of evolutionary characteristics and high resolution at the species level [56, 57, 61].

2. Materials and Methods

2.1. Biological Material. *Polygala paniculata* plants samples and their rhizospheric soil were collected in Peruíbe, south coastal municipality of São Paulo State, Brazil (–24° 19' 12" , 46° 59' 54") (SisGen, registration number: AF1A75A), and vouchers (F.P.N. Cruz 3) were deposited at the Federal University of Sao Carlos (SPSC) and Botanical Garden of Rio de Janeiro (RB) herbaria and registered to the Brazilian Genetic Resources Managing System (SisGen; registration AF1A75A). Plant’s identity was confirmed as *Polygala paniculata* Linnaeus [62], in accordance with Marques and Gomes [63]. The bacterial community was isolated after superficial disinfection of the plant by serial washing in 70%

ethanol for 2 min, NaClO for 3 min, 70% ethanol for 1 min, and double rinse with distilled H₂O. The plant structures were grounded and incubated in phosphate-buffered solution (PBS) (NaCl, 8.0 g/L; KCl, 0.2 g/L; Na₂HPO₄, 1.44 g/L; KH₂PO₄, 0.24 g/L; pH, 7.4) at 28°C/200 rpm for 2 hours. Subsequently, 100 µL of 1 : 10 serial dilutions were inoculated on tryptic soy agar (TSA) supplemented with benomyl (50 µg/mL) and incubated at 28°C until growth [64, 65]. The isolation of the rhizospheric community was based on Andreote et al. [66] with slight modifications. Ten grams of rhizospheric soil were placed in Erlenmeyer flasks containing 90 mL of sterile PBS and incubated under the same conditions already described. Finally, 100 µL of decimal dilutions was inoculated in TSA and cultured at 28°C until bacterial growth.

2.2. Screening of Antimicrobial and Enzymatic Activities. Fourteen bacterial isolates were randomly selected (four from rhizosphere and ten endophytes) and qualitatively tested by the overlay test [44, 67, 68] for the antimicrobial activity screening. A total of 100 µL of precultured isolates in International *Streptomyces* Project medium 2 (ISP2) (malt extract: 10 g/L; yeast extract: 4 g/L; and glucose: 4 g/L) [69] was adjusted to OD₆₀₀ between 0.3 and 0.6 and inoculated in the center of the Petri dishes containing ISP2 agar and incubated at 28°C for 72 hours. Then, the isolates were exposed to chloroform for inactivation, followed by a 30-minute evaporation step. Subsequently, semisolid brain-heart infusion agar (BHI), previously inoculated with test microorganisms (*Staphylococcus aureus* ATCC 29213, *Escherichia coli* ATCC 11775, and *Candida albicans* ATCC 10231), was poured onto the inactivated isolate.

The antagonism test for phytopathogenic fungi was performed as described by Quiroga et al. [70]. The isolated strains were streaked in potato dextrose agar (PDA) at the edges of the plates and incubated at 28°C until their complete growth. Next, a 0.6 cm plug of the phytopathogenic fungus mycelium was placed at the top of the plate containing the grown isolate. The plates were incubated again at 28°C. As a negative control, each phytopathogen was cultured in PDA for indicating the time of the inhibition evaluation [71]. All tests were performed in triplicates. All pathogenic strains used in this study are listed in Table 1.

The assessment of enzymatic potential consisted in a preculture of *Polygala paniculata*-derived bacteria in 3 mL of tryptic soy broth (TSB-KASVI) and incubated for 48–72 hours at 28°C. Then, 2 µL of the culture was transferred to a M9 enzymatical solid medium (200 mL/L of stock solution (64 g/L Na₂HPO₄·7H₂O; 15 g/L KH₂PO₄; 2.5 g/L NaCl; 5 g/L NH₄Cl)); 2 mL/L 1 M MgSO₄; 10 g/L; 0.1 mL/L CaCl₂ 1 M; 15 g/L agar, pH 7.2, with different supplements, depending on the activity to be studied: (1) 0.5% yeast extract and 1% soluble starch for amylase activity; (2) 0.5% yeast extract and 1% carboxymethyl cellulose for cellulase activity; (3) 0.5% yeast extract and 1% pectin, pH 8.0 for pectin-pectate lyase; and (4) 0.5% yeast extract and 1% pectin, pH 5.0 for pectin-polygalacturonase. The lipase/esterase media consisted of peptone, 10 g/L; NaCl, 5 g/L; CaCl₂·H₂O, 0.1 g/L; agar, 15 g/L;

pH 7.4, supplemented with 1% (v/v) of Tween 20 and Tween 80 for lipolytic and esteratic activities, respectively. The following components were used for protease medium: 5 g/L of tryptone; 2.5 g/L of yeast extract; 1.0 g/L of glucose; 2.5 g/L of NaCl; 15 g/L of agar; and the pH adjusted to 7.0. All components were sterilized at 121°C for 15 minutes, and 100 mL skimmed milk was added for completing one liter.

The experiment was performed in triplicate, and the isolates were incubated for 48 h at 28°C. Congo red dye was used as a revealer (15 minutes) followed by a washing step with 5 M NaCl for the cellulase activity visualization. Iodine tincture was used for amylase and pectinases tests. The enzymatic production of protease, lipase, and esterase activities was visualized as a bright halo around the colonies [72].

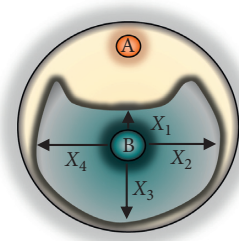
2.3. Natural Products Extraction. The isolate GLB 2 was selected for the next experiments due to its broad-spectrum, high bioactivity rates in antimicrobial screening, and capacity to biosynthesize multiple enzymes. The natural products extract (NPE) of the isolate GLB 2 was obtained through the inoculation of 10 µL of a preculture in round-bottom tubes (12 mL capacity) containing 3 mL of ISP2 and incubated at 220 rpm/28°C for three days. Subsequently, the culture was inoculated in 100 mL of ISP2 in a 250 mL flask and maintained under the same conditions for seven days. The culture was then centrifuged at 4,500 rpm for 10 min and extracted by solid-phase using polypropylene mesh packages containing 1.5 g of Amberlite® XAD16 resin (Sigma-Aldrich), which were added to the fermented broths and overnight incubated on a rotary shaker under the same conditions described. The resin bags were then removed and packed in glass tubes containing 20 mL of MeOH : EtOAc (1 : 1). The extracts were dried and concentrated by Vacufuge plus (Eppendorf), resuspended at a 50 mg/mL concentration in 100% dimethyl sulfoxide (DMSO) and maintained at –80°C [73].

2.4. Antagonism Index in Phytopathogens. The isolate GLB 2 NPE antagonism index (AI) was determined by the inoculation of 500 µg of its NPE in a sterile disk placed on top of the plate. A plug of phytopathogenic fungus was inoculated in the center. The assay positive control consisted of culturing each phytopathogen, as described above, in the presence of 500 µg of benomyl, whereas for the negative control, each phytopathogen was cultured to indicate the expected fungi growth. All measurements were performed in triplicate (Figure 1).

2.5. Minimum Inhibitory Concentration. The minimum inhibitory concentration (MIC) of the NPE was performed in triplicate, according to recommendations of the Clinical and Laboratory Standards Institute (CLSI) [74] against pathogenic bacteria *Staphylococcus aureus* ATCC 25923, *Staphylococcus epidermidis* ATCC 35984, *Enterococcus faecalis* ATCC 29212, *Enterococcus faecium* ATCC 700221, *Acinetobacter baumannii* ATCC 19606, *Escherichia coli* ATCC 25922, *Klebsiella*

TABLE 1: Pathogenic strains used in this study.

| Public health pathogens | Phytopathogens |
|--|-------------------------------------|
| <i>Staphylococcus aureus</i> ATCC 25923 | <i>Sclerotinia sclerotiorum</i> |
| <i>Staphylococcus aureus</i> ATCC 29213 | <i>Moniliophthora perniciosa</i> |
| <i>Staphylococcus epidermidis</i> ATCC 35984 | <i>Fusarium solani</i> |
| <i>Enterococcus faecium</i> ATCC 700221 | <i>Fusarium oxysporum</i> ATCC 2163 |
| <i>Enterococcus faecalis</i> ATCC 29212 | <i>Sphaceloma</i> sp. |
| <i>Micrococcus luteus</i> ATCC 9341 | <i>Ceratocystis paradoxa</i> |
| <i>Acinetobacter baumannii</i> ATCC 19606 | <i>Alternaria alternata</i> |
| <i>Escherichia coli</i> ATCC 25922 | <i>Fusarium proliferatum</i> |
| <i>Klebsiella pneumoniae</i> ATCC 700603 | <i>Colletotrichum</i> sp. |
| <i>Pseudomonas aeruginosa</i> ATCC 27853 | <i>Fusarium verticillioides</i> |
| <i>Candida albicans</i> ATCC 10231 | <i>Fusarium oxysporum</i> —bean |
| | <i>Fusarium oxysporum</i> —cotton |
| | <i>Phytophthora sojae</i> |
| | <i>Rhizopus microsporus</i> |



(a)

(b)

FIGURE 1: Schematic representation of the quantitative assay for the AI determination: (a) paper disk containing NPE of *Burkholderia cepacia* COPS; (b) phytopathogenic fungus mycelium. The inhibition index was calculated by the formula using the means of the mycelial growth measurements in centimeters.

pneumoniae ATCC 700603, and *Pseudomonas aeruginosa* ATCC 27853. An overnight culture of each pathogen was diluted until reaching a 5×10^5 CFU.mL⁻¹ final concentration in Müller–Hinton cation adjusted (MHCA) broth with several concentrations of COPS NPE (from 100 to 1.5 µg/mL at 1% DMSO) and incubated for 24 h, at 37°C. As a positive control, ciprofloxacin was used at the same concentration gradient, and bacterial suspensions in MHCA broth and 1% DMSO were used as negative controls. The bioactivity was analyzed by measuring each well's optical density 24 hours after administration of NPE in a microtiter plate reader.

2.6. In Vitro Activity Assay against *Leishmania* spp. Cultures of promastigote forms of *Leishmania infantum* strain MHOM/BR/1972/LD and *L. major*, maintained at -80°C in a freezing solution (DMSO/fetal bovine serum—1 : 10), were thawed and transferred to 9 mL of Schneider's medium (Sigma-Aldrich, USA) supplemented with 10% inactivated fetal bovine serum (Vitrocell Embriolife, BRA), 10% human urine from male volunteers aged between 25 and 35 years, and 1% of penicillin and streptomycin. The cultures were then centrifuged for 5 min at 5000 rpm, and the pellet was resuspended in 1 ml of the same medium, which was transferred to a 50 mL capacity cell culture bottle

containing 9 mL of fresh medium and incubated at 26°C in 5% CO₂.

The toxicity assay consisted of the inoculation of promastigotes in the stationary phase (10⁷ cells/mL) in 96 well plates containing different concentrations of NPE (200, 100, 50, 25, 10, and 1 µg/mL). They were tested in biological triplicates and experimental duplicates. The OD₅₅₀ was measured by a spectrophotometer (Thermo Scientific Multiskan GO spectrophotometer) 24 hours after the administration of NPE. Amphotericin B (Sigma-Aldrich, USA) at 100 µM was used as a positive control. The cell viability percentage was calculated from the absorbance of the negative control, which represents 100% of cell viability (% of living cells = test OD₅₅₀ × 100/negative control OD₅₅₀), and IC₅₀ was measured by nonlinear regressions of the values found for each concentration in, at least, three independent experiments.

2.7. Statistical Analysis. The results were analyzed by GraphPad Prism 8.0.1 software (San Diego, California, USA), and the Shapiro–Wilk test was applied to all data obtained. Subsequently, one-way ANOVA (one-way analysis of variance), followed by Dunnett's multiple comparisons test were applied using a statistical significance at $p < 0.05$ (95%).

TABLE 2: Results of the initial screening against pathogens.

| | Pv110 | Pv168 | GLB10'' | GLB10' | Roxo20 | Pv150 | Pv48 | Roxo19 | Roxo16 | Pv55 | WFRh72 | Pv46 | Unk3 | GLB2 |
|---|-------|-------|---------|--------|--------|-------|------|--------|--------|------|--------|------|------|------|
| <i>Human pathogens</i> | | | | | | | | | | | | | | |
| <i>Escherichia coli</i> ATCC 25922 | - | - | - | - | - | - | - | - | - | + | - | - | - | + |
| <i>Staphylococcus aureus</i> ATCC 29213 | - | - | - | - | + | - | - | + | + | - | - | - | + | + |
| <i>Candida albicans</i> ATCC 10231 | - | - | - | - | - | - | - | - | - | - | - | - | - | + |
| <i>Phytopathogenic fungi</i> | | | | | | | | | | | | | | |
| <i>Moniliophthora perniciosa</i> | - | - | - | - | - | - | - | - | - | - | - | - | + | + |
| <i>Sclerotinia sclerotiorum</i> | - | - | - | - | - | - | - | - | - | + | - | - | + | + |
| <i>Fusarium solani</i> | - | - | - | - | - | - | - | - | - | + | - | - | + | + |
| <i>Fusarium verticillioides</i> | - | - | - | - | - | - | - | - | - | + | - | - | + | + |
| <i>Fusarium proliferatum</i> | - | - | - | - | - | - | - | - | - | + | - | - | + | + |
| <i>Fusarium oxysporum</i> (bean) | - | - | - | - | - | - | - | - | - | + | - | - | + | + |
| <i>Fusarium oxysporum</i> (cotton) | - | - | - | - | - | - | - | - | - | + | - | - | + | + |
| <i>Fusarium oxysporum</i> (ATCC 2163) | - | - | - | - | - | - | - | - | - | + | - | - | + | + |
| <i>Phytophthora sojae</i> | - | - | - | - | - | - | - | - | - | + | - | - | - | + |
| <i>Ceratocystis paradoxa</i> | - | - | - | - | - | - | - | - | - | + | - | - | + | + |
| <i>Colletotrichum</i> sp. | - | - | - | - | - | - | - | - | - | + | + | - | + | + |
| <i>Rhizopus microsporus</i> | - | - | - | - | - | - | - | - | - | + | + | - | + | + |
| <i>Alternaria alternata</i> | - | - | - | - | - | - | - | - | - | + | - | - | + | + |
| <i>Sphaceloma</i> sp. (CNPV 102) | + | - | - | - | - | - | - | - | - | + | - | - | + | + |

TABLE 3: Enzymatic activity of bacteria isolated from *Polygala paniculata*.

| | Amylase | Cellulase | Protease | Polygalacturonase | Pectate lyase | Lipase | Esterase |
|----------|---------|-----------|----------|-------------------|---------------|--------|----------|
| PV 46 | + | - | + | + | + | + | - |
| PV 48 | - | - | - | - | + | - | - |
| PV 55 | - | - | + | - | - | + | + |
| PV 110 | - | - | - | - | + | - | - |
| PV 150 | + | + | + | + | + | - | - |
| PV 168 | - | - | + | - | - | - | - |
| WF.RH.72 | - | - | - | - | - | - | - |
| UNK 3 | - | - | + | - | - | - | - |
| GLB 2 | - | - | + | - | - | + | + |
| GLB 10' | - | - | + | - | + | - | - |
| GLB 10'' | - | - | + | - | + | + | - |
| Roxo 16 | - | - | + | - | - | - | - |
| Roxo 19 | - | - | + | - | - | - | - |
| Roxo 20 | - | - | + | - | - | - | - |

The statistical significance in *Leishmania* assays was calculated by Tukey's multiple comparison test after one-way ANOVA analysis.

2.8. Genomic DNA Isolation. Isolate GLB 2 was cultivated for three days/28°C in 20 mL of ISP2 broth (malt extract, 10 g/L; glucose, 4 g/L; yeast extract, 4 g/L; pH 7.3), and cells were harvested by centrifugation at 8000 rpm for 10 minutes. Genomic DNA was then extracted using DNeasy Kit (Qiagen) with a lysis process consisting of four cycles of incubation of cell pellets at 65°C for 15 minutes in 180 µL of ATL buffer followed

by freezing at -80°C for 15 minutes. DNA was eluted in 100 µL of H₂O, and its quality was analyzed on 0.7% agarose gel stained with hydra green and quantified using a NanoDrop.

2.9. Genome Sequencing, Assembly, and Functional Annotations. Pair-ended sequences were obtained by Illumina MiSeq (Illumina, San Diego, USA) platform using a 2x250 bp library prepared using Nextera XT DNA kit with v3 600 cycles. Illumina paired end reads were first preprocessed for quality analysis using FastQC—Unipro UGENE v. 34 [75] and trimmed using Trimmomatic—Galaxy v. 0.38.0 [76] for removing quality bases lower than 20 and adapters.

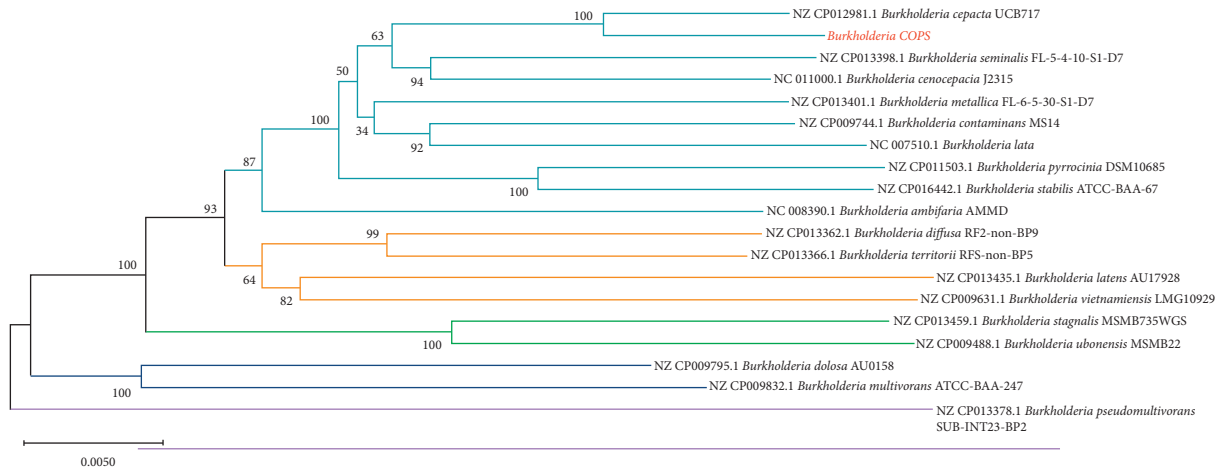


FIGURE 2: Consensus tree obtained from a neighbor-joining phylogenetic analysis using the Jukes-Cantor method (bootstrap with 1000 replicates) based on the concatenated full length of seven housekeeping and 16S rDNA gene of *B. cepacia* COPS strain compared to reference sequences of Bcc members.

TABLE 4: Genomic comparisons between *Burkholderia cepacia* COPS and *B. cepacia* strains based on genome comparisons and multilocus sequence analysis.

| Strain | Genome comparisons | | | | Multilocus sequence analysis | | | |
|---|--------------------|--------------|--------------|--------------|------------------------------|-------------|----------------|------------------|
| | GC (%) | ANIm (%) | ANib (%) | dDDH (%) | Tetra | Locus | Identity (%) | Allele |
| <i>Burkholderia cepacia</i> RB-39 | 65.91 | 93.68 | 91.82 | 51.00 | 0.99738 | <i>atpD</i> | 100 | <i>atpD</i> 235 |
| <i>Burkholderia cepacia</i> DDS 7H-2 | 67.05 | 92.01 | 90.20 | 43.30 | 0.99559 | <i>gltB</i> | 100 | <i>gltB</i> 707 |
| <i>Burkholderia cepacia</i> DWS 16B-4 | 67.07 | 92.01 | 90.24 | 43.30 | 0.99561 | <i>gyrB</i> | 99.7797 | <i>gyrB</i> 1041 |
| <i>Burkholderia cepacia</i> LMG 16656 | 66.88 | 92.07 | 90.08 | 43.60 | 0.99553 | <i>lepA</i> | 99.4962 | <i>lepA</i> 3 |
| <i>Burkholderia cepacia</i> MSMB1302 | 66.81 | 96.22 | 95.19 | 67.00 | 0.99924 | <i>phaC</i> | 99.4805 | <i>phaC</i> 279 |
| <i>Burkholderia cepacia</i> LK13 | 66.47 | 98.72 | 98.04 | 87.80 | 0.99948 | <i>recA</i> | 100 | <i>recA</i> 1 |
| <i>Burkholderia cepacia</i> NBRC 14074 | 66.67 | 97.56 | 96.86 | 77.20 | 0.99929 | <i>trpB</i> | 100 | <i>trpB</i> 21 |
| <i>Burkholderia cepacia</i> NCTC10743 | 66.60 | 97.56 | 96.86 | 77.10 | 0.99932 | | | |
| <i>Burkholderia cepacia</i> ATCC 25416 | 66.58 | 97.56 | 96.87 | 77.10 | 0.99935 | | | |
| <i>Burkholderia cepacia</i> GG4 | 66.68 | 91.30 | 88.62 | 36.80 | 0.99608 | | | |
| <i>Burkholderia cepacia</i> JBK9 | 66.82 | 92.35 | 90.59 | 45.00 | 0.99686 | | | |
| <i>Burkholderia cepacia</i> MSMB591WGS | 66.43 | 98.71 | 98.13 | 87.40 | 0.99932 | | | |
| <i>Burkholderia cepacia</i> MSMB1224WGS | 66.86 | 97.94 | 97.23 | 80.70 | 0.99892 | | | |
| <i>Burkholderia cepacia</i> LO6 | 66.99 | 89.93 | 86.75 | 36.20 | 0.97175 | | | |
| <i>Burkholderia</i> sp. LK4 | 66.46 | 98.78 | 98.05 | 87.80 | 0.99950 | | | |
| <i>Burkholderia reimsis</i> BE51 | 66.37 | 98.72 | 98.05 | 86.50 | 0.99938 | | | |
| <i>Burkholderia lata</i> LK27 | 66.76 | 98.53 | 96.91 | 87.90 | 0.99926 | | | |

Bold values based on ANI, dDDH, and TETRA (threshold of $\geq 96\%$, $\geq 70\%$, and TETRA $> 0.9999\%$, respectively) represent that strains belong to the same genomic species, whereas in multilocus sequence analysis, bold values represent new alleles of housekeeping genes within *Burkholderia* spp.

Burkholderia sp. genome was assembled using SPAdes Genome Assembler—Galaxy v. 3.12.0 [77] applying kmers 21, 33, and 55. Quality assessment of assemblies was evaluated using the software QUAST Genome assembly Quality—Galaxy v. 5.0.2 [78] followed by annotation using Prokka—Prokaryotic genome annotation v. 1.14.1—Galaxy v. 1.14.5 [79] and Rast v. 2.0 [80] (<https://rast.nmpdr.org/rast.cgi>). Finally, GLB 2 genomic contigs were mapped against the reference genome of *B. cepacia* ATCC 25416 using CON-TIGuator v. 2.7.4 [81].

2.10. Phylogenetic and Multilocus Sequence Analysis. Isolate GLB 2 16S ribosomal RNA gene was identified by RNAmmer 1.2 server (<http://www.cbs.dtu.dk/services/>) [82] and identified based on 16s rRNA BLAST search.

The complete 16S rRNA and housekeeping gene sequences *atpD* (ATP synthase β chain—1,395 bp), *gltB* (glutamate synthase large subunit—4,704 bp), *gyrB* (DNA gyrase B—2,475 bp), *recA* (recombinase A—1,071 bp), *lepA* (GTP binding protein—1,794 bp), *phaC* (acetoacetyl-CoA reductase—741 bp), and *trpB* (tryptophan synthase subunit B—1,194 bp) from reference Bcc members were retrieved from PubMLST database (<http://www.pubMLST.org/bcc/>) and aligned with the endophytic *B. cepacia* nucleotide sequences by ClustalW and concatenated using MEGA X software [83].

The phylogenetic trees of multiple alignments of 16S rRNA and concatenated housekeeping gene sequences were generated by MEGA X. The neighbor-joining method [84, 85] using Jukes-Cantor as a substitution model, respectively, as well 1000 bootstrap replications as branch support for the construction of the trees.

2.11. *Comparative Genomic Analysis.* Average nucleotide identity (ANI) [86–88], calculation of tetra nucleotide frequencies, and correlation coefficients [89] values were estimated based on BLAST alignments using JSpeciesWS (<http://jspecies.ribohost.com/jspeciesws/>) [90, 91], whereas GGDC 2.1 (<http://ggdc.dsmz.de/distcalc2.php>) using BLAST+ alignment and recommended formula (2) were used to calculate the genome-to-genome distance [92, 93].

Additional in silico analyses of GLB 2draft-genome were performed using PathogenFinder 1.1 [94] and ResFinder 4.1 [95, 96] to estimate the number of pathogenicity determinants and antibiotic resistance genes (<https://cge.cbs.dtu.dk/services>).

3. Results

3.1. *Antimicrobial and Enzymatic Potential Screening.* Fourteen bacterial isolates were randomly selected (endophytes and from rhizosphere) and tested by overlay assay against *S. aureus* ATCC 29213, *E. coli* ATCC 11775, and *C. albicans* ATCC 10231 and phytopathogenic fungi as a primary selection on solid media. The results of the antimicrobial and enzymatic screening assay data are summarized in Tables 2 and 3. We observed that protease was the most abundant enzymatic activity detected, followed by pectinase at pH 8.0 (pectate lyase). Based on such results, we selected the isolate GLB2, which showed the antagonism activity against all tested pathogens and presented the enzymatic activity. We coined the isolate *Burkholderia cepacia* COPS strain in this study.

3.2. *Burkholderia cepacia* COPS Genome. Root endophyte GLB2 isolate, which revealed a broad-spectrum and potent activity against all pathogens tested, was identified as *Burkholderia cepacia* based on 16S rRNA BLAST (GenBank accession number MN939546) search. The phylogenetic analysis revealed the isolate belongs to the *Burkholderia* sensu stricto group and is closely related to Bcc genomovar.

Genome sequencing of *Burkholderia cepacia* COPS strain generated 1,970,487 reads with an average length of 35–251 bp. The assembled genome estimated in 8.3 Mbp distributed in 80 contigs with an N50 of 275,353 bp. The functional annotation predicted 1885 genes, of which 1,838 are protein-coding genes (CDSs), 21 tRNAs, 26 misc RNAs, and 66.87% of a GC content. The draft-genome sequence was deposited in GenBank under accession number WIXR00000000.

Phylogenetic inferences (neighbor-joining and maximum likelihood) of COPS strain and Bcc reference strains of individual 16S rRNA and housekeeping genes *atpD* and *phaC* showed low-resolution bootstrap values. In addition, COPS strain is clustered separately from *B. cepacia* UCB 717 forming a single branch, whereas *gltB*, *gyrB*, *lepA*, *recA*, and *trpB* were strongly supported, as well lineages clearly grouped (Supplementary Material 1–8).

The multilocus sequence typing of *Burkholderia cepacia* COPS using the MLST-2.0 server revealed this strain belongs to the novel ST 1870 (ID 3851), with the following alleles

numbers: *atpD* (235), *gltB* (707), *trpB* (21), *recA* (1), *gyrB* (1205), *lepA* (789), and *phaC* (607). Phylogenies regarding concatenated sequences (14833 bp) of the full length of seven housekeeping genes showed a significant branch support and strong association with *B. cepacia* UCB717 (Figure 2).

Pairwise digital DNA-DNA hybridization (dDDH) of COPS strain compared to 13 sequences of other *Burkholderia cepacia* strains revealed identity levels ranging from 87.90% to 80.70%, whereas ANIm, ANIb, and tetra-nucleotide frequency signature (TETRA) values of *Burkholderia* sp. LK4, *B. reimsis* BE51, and *B. lata* LK27 were interestingly slightly higher when compared to *B. cepacia* strains. Table 4 summarizes the genome level comparisons of COPS to other *B. cepacia* strains.

Genome analysis performed using ResFinder 4.1 revealed the presence of ORFs corresponding to aph(3')-IIa (99.75% identity) and blaTEM-116 (100% identity) genes, which confer resistance to aminoglycosides and beta-lactams, respectively. Nevertheless, *B. cepacia* COPS was estimated in 0.829 as a human pathogen, and its genome matched 53 pathogenic and five nonpathogenic families by PathogenFinder 1.1.

3.3. *Antagonistic Effects of Burkholderia cepacia* COPS Crude Extract. Regarding the bioactivity against bacterial and yeast pathogens in overlay assay, *B. cepacia* COPS potentially inhibited *S. aureus* ATCC 29213, *E. faecalis* ATCC 29212, *E. coli* ATCC 25922, *M. luteus* ATCC 9341, and *C. albicans* ATCC 10231. However, the NPE obtained from the COPS cultivation in ISP2 revealed inhibition against Gram-positive bacteria as well as *A. baumannii* ATCC 19606 and *E. coli* ATCC 25922 at 512 µg/mL. In addition, the NPE inhibited all phytopathogenic fungi in primary screening by a two-by-two streaking test. The inhibition index calculation was based on the inoculation of 500 µg/disk of *B. cepacia* COPS NPE. The phytopathogenic fungi *M. perniciosa*, *S. sclerotium*, and *C. paradoxa* showed the highest inhibition percentages (89.32%, 85.53%, and 82.69%, respectively). The antagonism activity of NPE exceeded the positive control (74.17%) of *M. perniciosa*, whereas *R. microsporus* and *F. oxysporum* ATCC 2163 were less inhibited (6.59% and 7.17%, respectively) (Figure 3 and Table 5).

3.4. *Activity against Leishmania spp.* We tested the activity of *B. cepacia* COPS NPE *in vitro* against *Leishmania infantum* and *Leishmania major*. A 24-hour treatment with NPE concentrations ranging from 200 to 1 µg/mL potentially inhibited *L. infantum* promastigotes with cell viability ranging from 27% to 78.25%, respectively, with IC₅₀ of 86.6 µg/mL. Moreover, the NPE in the highest concentration tested was more effective than amphotericin B at 100 µM (28.6% cell viability).

On the other hand, the effect of COPS NPE against *Leishmania major* was not so potent compared to *L. infantum*. The results show 57.30% cell viability in a 200 µg/mL concentration and an IC₅₀ of 94.55 µg/mL.

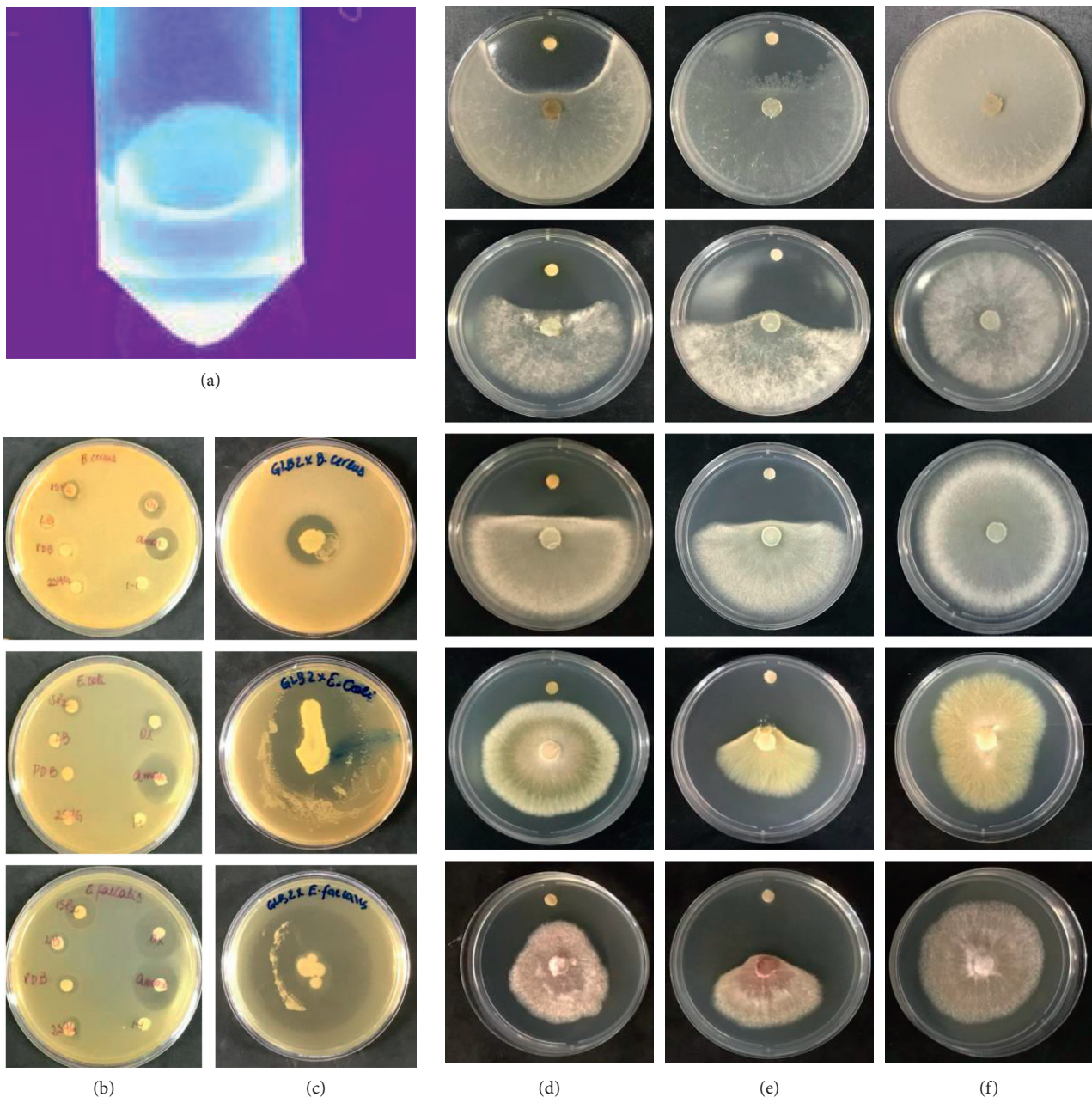


FIGURE 3: Antimicrobial activity of NPE (a) produced by *B. cepacia* COPS. Columns (b) and (c) correspond to different crude extracts' antibacterial activity compared to overlay assay (top to bottom: *Bacillus cereus*, *Escherichia coli*, and *Enterococcus faecalis*). Lanes (d) COPS NPE, (e) benomyl, as positive control, and (f) negative control represent the antifungal effect. From top to bottom: *Moniliophthora perniciosa*, *Ceratocystis paradoxa*, *Sclerotinia sclerotiorum*, *Alternaria alternata*, and *Fusarium verticillioides*.

Figure 4 summarizes the enzymatic and antileishmanial effects of *B. cepacia* COPS.

4. Discussion

Burkholderia spp. are nonfermenting bacteria spread worldwide and highly able to adapt to various ecological niches [43, 46, 97–99]. Although Bcc is considered potentially life-threatening as an opportunistic pathogen in hospital environments, especially in patients with cystic fibrosis,

Burkholderia spp. are versatile for biotechnological applications, and their potential has been exploited for bioremediation, plants growth promotion, biological control, and broad-spectrum agents in several members of this group [41, 46, 47, 100].

Burkholderia genus (sensu lato) comprises more than 100 species that possess the ability to adapt to various ecological niches [99, 101]. Members of this complex group exhibit genomes ranging from 7 to 9 Mbp, resulting in several taxonomic rearrangements [46, 99], rapid mutation, and adaptation [102]. Bcc species exhibit high genetic

TABLE 5: Antagonistic activity of *B. cepacia* strain COPS NPE toward phytopathogenic fungi and pathogenic bacteria.

| | Phytopathogenic fungi | | Public health pathogens | | |
|---------------------------------------|-------------------------|-------------------|--|--|---------------------------|
| | NPE treatment AI (%) | Benomyl AI (%) | | GLB2 treatment MIC ($\mu\text{g/mL}$) | IC50 ($\mu\text{g/mL}$) |
| <i>Moniliophthora perniciosa</i> | 89.32 | 74.17 | <i>Staphylococcus aureus</i> ATCC 25923 | 128 | 58.36 |
| <i>Sclerotinia sclerotiorum</i> | 85.53 | 86.26 | <i>Staphylococcus epidermidis</i> ATCC 35984 | 32 | 22.49 |
| <i>Fusarium solani</i> | 37.97 | 85.54 | <i>Enterococcus faecium</i> ATCC 700221 | 32 | 24.11 |
| <i>Fusarium verticillioides</i> | 27.10 | 92.79 | <i>Enterococcus faecalis</i> ATCC 29212 | 64 | 26.34 |
| <i>Fusarium proliferatum</i> | 26.27 | 92.17 | <i>Acinetobacter baumannii</i> ATCC 19606 | 512 | 298.2 |
| <i>Fusarium oxysporum</i> (bean) | 15.95 | 90.58 | <i>Escherichia coli</i> ATCC 25922 | 512 | 103.4 |
| <i>Fusarium oxysporum</i> (cotton) | 13.21 | 89.79 | <i>Klebsiella pneumoniae</i> ATCC 700603 | >512* | N.D. |
| <i>Fusarium oxysporum</i> (ATCC 2163) | 7.17 | 94.42 | <i>Pseudomonas aeruginosa</i> ATCC 14502 | >512** | N.D. |
| <i>Phytophthora sojae</i> | 61.15 | 100.00 | | | |
| <i>Ceratocystis paradoxa</i> | 82.69 | 100.00 | | | |
| <i>Colletotrichum</i> sp. | 42.27 | 100.00 | | | |
| <i>Rhizopus microsporus</i> | 6.59 | 26.53 | | | |
| <i>Alternaria alternata</i> | 22.53 | 87.48 | | | |
| <i>Sphaceloma</i> sp. (CNPUV 102) | 61.45 | 27.52 | | | |

*Partial inhibition at 512 $\mu\text{g/mL}$ (14.09%); **partial inhibition at 512 $\mu\text{g/mL}$ (25.36%).

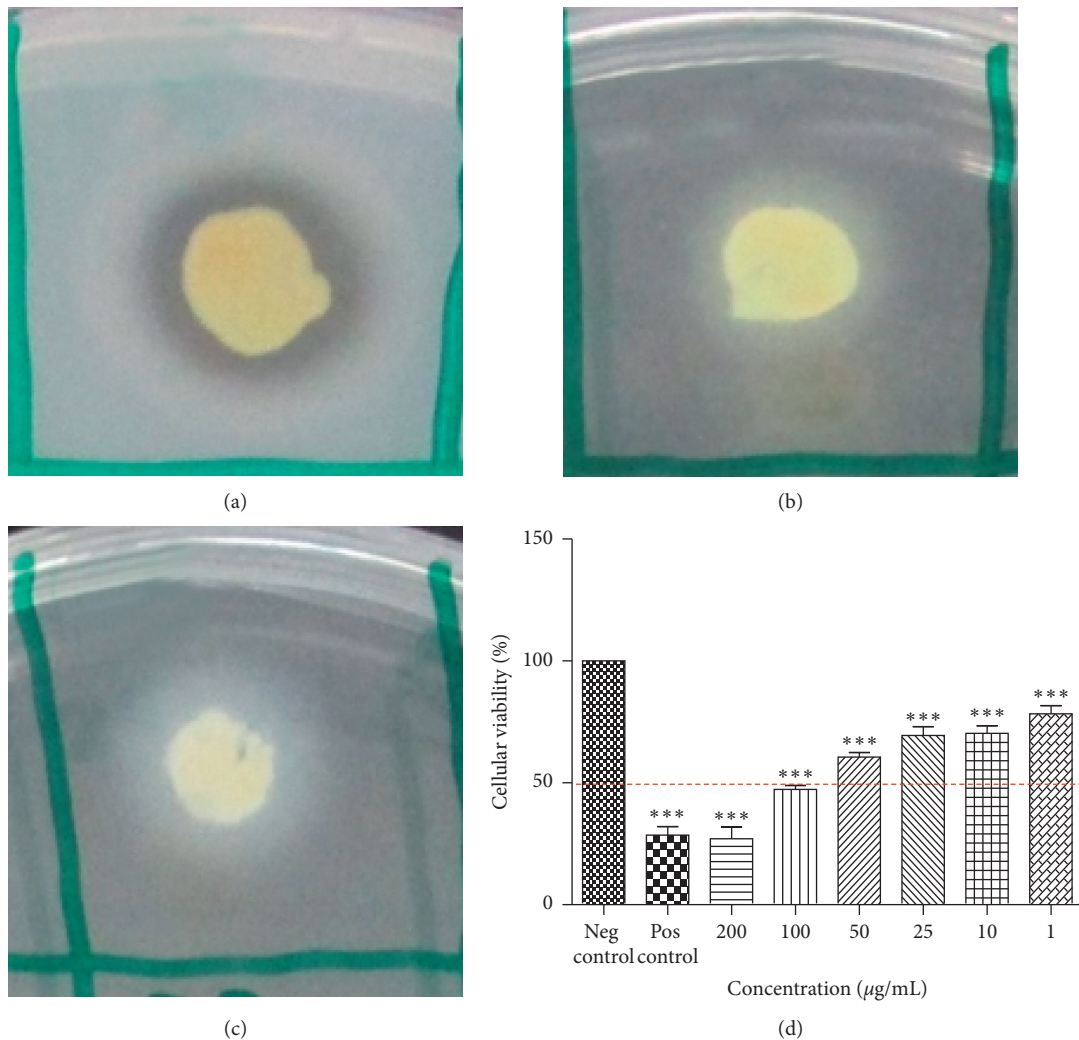


FIGURE 4: Continued.

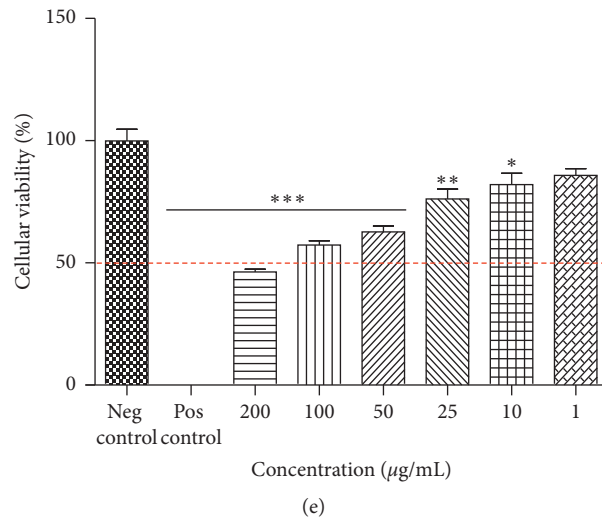


FIGURE 4: Evaluation of enzymatic production of *Burkholderia cepacia* COPS in solid media: (a) protease; (b) esterase; (c) lipase. Activity of *B. cepacia* COPS NPE at different concentrations against promastigotes of *L. infantum* (d) and *L. major* (e) after 24 hours of exposure. Values represent two independent experiments performed in triplicate. *** Indicates statistical significance compared to the negative control, with values of $p < 0.001$.

similarity and is phenotypically indistinguishable [102–104], leading to often misidentifications interfering the effective treatment and epidemiological studies [52, 105].

Our analyses concerning COPS strain for pathogenicity determinants using PathogenFinder 1.1 revealed a prediction of pathogenic potential of 0.829, whereas the reference *B. cepacia* ATCC 25416 was 0.774. Interestingly, Z-scores of TETRA correlation were slightly higher (*Burkholderia* sp. LK4, *B. reimsis* BE51, and *B. lata* LK27) when compared to *B. cepacia* strains.

The analysis of sequence variations of *recA* and *hisA* genes offers further discriminatory support at species-level identification [53, 104, 106]. However, multilocus sequence typing offers more sensitivity to identify species within Bcc [57, 107–109]. Our results showed a significant branch support (100%) and a strong association with *B. cepacia* UCB717 and revealed novel alleles of *gyrB*, *lepA*, and *phaC*, which led us to describe the novel ST 1870. As mentioned, *Burkholderia* spp. may be found in a wide range of niches, and genetic variations might occur in response to niche adaptation [41, 109].

Regarding the individual alignments of *atpD* and *phaC*, our results showed low-resolution bootstrap values, which corroborate inconsistencies found in MLST, ANI, and DNA hybridization of the soil isolate *Burkholderia catarinensis* sp. nov., formerly reported as *B. cepacia* [110]. Analysis by matrix-assisted laser desorption/ionization time-of-flight mass spectrometry (MALDI-TOF MS) enabled the proper identification of novel species of *Burkholderiales*. Interestingly, *B. catarinensis* exhibits physiological characteristics that differ from most other Bcc species [52].

In summary, the present study confirms that COPS strain is closely related to *B. cepacia* based on the whole-genome ANI, individual housekeeping gene sequence

analysis, and MLST. Moreover, we present for the first time the identification of a *B. cepacia* symbiotically/endophytically associated with *Polygala paniculata* suggesting that *Polygala* genus plays a role in harboring microorganisms for biotechnological applications.

The detection of *in vitro* production of active compounds may be tricky. Usually, quorum sensing (QS) also controls the production of multiple antimicrobial substances. The cell density can promote a signaling system that transcribes certain genes for their interaction with their hosts and increases resistance to stresses [43, 111]. However, the presence of nutrients in the fermentation medium might affect the biosynthesis of QS signaling molecules, such as N-acyl homoserine lactones. Keum et al. [112] demonstrated that glucose (present in ISP2 at 4 g/L in its composition) increases the biomass, but suppresses the production of pyrrolnitrin, which is effective against fungi, yeasts, and Gram-positive bacteria [113]. Nevertheless, Figure 4 shows that the COPS NPE produced by the cultivation in ISP2 still exhibited potent inhibition against phytopathogenic fungi (lanes D, E, and F). Interestingly, regarding cell proliferation, the cultivation of *B. cepacia* COPS in ISP2 showed higher cell density comparing to other media, such as Luria–Bertani medium [114], PDB [67], and 2S4G [115]. However, in disk diffusion assay, the NPEs obtained by cultivation in different media presented a nonsignificant activity (lane B). In contrast, the overlay assay using ISP2 showed a moderate activity against *B. cereus* and higher inhibition zones against *E. coli* and *E. faecalis* (lane C). Thus, these data corroborate related studies [112, 116, 117] concerning multiple secondary metabolites' production.

In agrobiology, the broad-spectrum activity of microorganisms that inhibit plant pathogens is critically important for biological control because the ability to antagonize phytopathogens can indirectly promote the host plant

growth [99, 118]. In this context, Orlandelli et al. [118] evaluated antagonism and competitive interactions of endophytic fungi isolated from *Piper hispidum* against *Alternaria alternata*, *Colletotrichum* sp., *Phyllosticta citricarpa*, and *Moniliophthora perniciosa*. Although fungus *Lasioidiplodia theobromae* showed activity against all tested phytopathogens in a dual culture assay, it exhibited antagonism indexes of 60.09% against *M. perniciosa*, 64.79% in *A. alternata*, and 54.16% in *Colletotrichum* sp. In our study, the NPE of *Burkholderia cepacia* COPS showed better inhibition toward *M. perniciosa*, thus exceeding the positive control (74.17%). On the other hand, the COPS crude extract showed mild effects toward *A. alternata* (22.53%) and *Colletotrichum* sp. (42.27%). The phytopathogenic fungus *Moniliophthora perniciosa*, which causes the witches' broom disease in cacao crops, is responsible for 90% losses in the cacao annual production [119, 120]. Therefore, it is of interest to have a microorganism, such as *B. cepacia* COPS, that could help in the cacao crops infection control.

Interestingly, de Almeida Lopes et al. [121] isolated three endophytic strains of Bcc from soybean plants. The cultivation in nutrient broth produced bioactive lipopeptides, extracted by different methods (methanol, ethyl acetate, and ammonium sulfate precipitation), and qualitatively tested regarding their capacity to inhibit fungal (*S. sclerotiorum*, *P. sojae*, and *R. solani*) and bacterial (*X. axonopodis* pv. *glycines* and *P. savastanoi* pv. *glycinea*) plant pathogens. The inhibition rates against the phytopathogenic fungi exceeded 70%; whereas, in our study, 200 µg of the COPS NPE promoted a potent inhibition of *Sclerotinia sclerotiorum* and showed a moderate activity against *P. sojae*.

Our analysis revealed that COPS NPE can potentially inhibit *C. paradoxa* but exhibits moderate and slight activities against *Colletotrichum* sp. and *Fusarium verticillioides*, respectively. Such phytopathogenic fungi and others are responsible for high losses in the production of several crops worldwide [122, 123]. *C. paradoxa* causes the black rot postharvest disease in pineapple [124] and also infects sugarcane [125, 126], palm trees, cacao plants, and several other crops [127]. *F. verticillioides* is a producer of fumonisin, a carcinogenic mycotoxin [128], and other species have been described as emergent and opportunistic pathogens in humans [129]. Fávoro et al. [125] monitored *E. nigrum* endophytically inoculated in sugarcane plants, and its extract significantly reduced the diameter of *Fusarium verticillioides*, *Colletotrichum falcatum*, *Ceratocystis paradoxa*, and *Xanthomonas albilineans* colonies at concentrations ranging from 0.1 to 2.0 mg/mL.

As discussed above, the COPS strain was capable of producing lipase in solid medium, and its NPE potentially inhibited *L. infantum* and *L. major*. These observations corroborate the work of Alves et al. [130] that investigated the antileishmanial activity of crude extracts of lipase-producing endophytic fungi toward *Leishmania amazonensis*. The antileishmanial activity of lipases of *Vermisporium* sp. (78.88%), *Emericella nidulans* (39.65%), *Dichotomophthora portulacae* (63.17%), and *Dichotomophthora boerhaaviae* (98.13%) was detected at 5 mg/mL in amastigote forms, suggesting an enhancement of antileishmanial activity by

lipases due to their thermal stability and resistance to several organic solvents, including alcohols [131]. Therefore, a detailed analysis of compounds produced by *B. cepacia* COPS is fundamental for a complete understanding of its potent antileishmanial effect.

Considering that the leishmaniasis treatment with pentavalent antimonials is known to be ineffective and unsafe and therapies based on pentamidine and amphotericin B are considered toxic and exhibit recurrence rates, it is clear that new treatment alternatives are necessary [132–136]. Although widely described as a producer of antibacterial and antifungal compounds [41, 42, 137–139], we emphasize that the *Burkholderia* species' antileishmanial activity was unknown so far. As we demonstrated in this study, *Burkholderiales* may offer promising candidates to treat neglected diseases of which resistance and toxicity of current treatments represent a global public health concern.

5. Conclusions

This research's novelty lies in the isolation of rhizospheric and endophytic bacteria associated with *Polygala paniculata* and isolation and biological activity determination of the root endophyte *Burkholderia cepacia* COPS strain. Our results demonstrated that *Polygala paniculata* is a promising source of microorganisms for the fight against *Leishmania* spp., bacteria of clinical importance, and phytopathogens.

Abbreviations

| | |
|-----------|--|
| AI: | Antagonism index |
| ANIb: | Average nucleotide identity based on BLAST |
| ANIm: | Average nucleotide identity based on MUMmer |
| Bcc: | <i>Burkholderia cepacia</i> complex |
| BHI: | Brain-heart infusion agar |
| CFU: | Colony forming units |
| CLSI: | Clinical and Laboratory Standards Institute |
| dDDH: | Digital DNA-DNA hybridization |
| DMSO: | Dimethyl sulfoxide |
| ISP2: | International <i>Streptomyces</i> Project medium 2 |
| MALDI-TOF | Matrix-assisted laser desorption/ionization time-of-flight mass spectrometry |
| MS: | Minimum inhibitory concentration |
| MIC: | Müller–Hinton cation adjusted |
| MHCA: | Multilocus sequence analysis |
| MLSA: | Multilocus sequence typing |
| MLST: | Natural products extract |
| NPE: | Optical density |
| OD: | Phosphate-buffered solution |
| PBS: | Potato dextrose agar |
| PDA: | Quorum sensing |
| QS: | Sequence type |
| ST: | Tetranucleotide frequency |
| TETRA: | Tryptic soy agar |
| TSA: | Tryptic soy broth. |

Data Availability

The data used to support the findings of this study are found in laboratory notebooks of Laboratory of Microbiology and Biomolecules (LaMiB), Department of Morphology and Pathology, Federal University of São Carlos, Brazil.

Conflicts of Interest

The authors declare that they have no conflicts of interest.

Authors' Contributions

Felipe de Paula Nogueira Cruz, Paulo Teixeira Lacava, Fernanda de Freitas Aníbal, and Cristina Paiva de Sousa contributed to conception and designed the study. Leonardo Maurici Borges identified the plant. Ilana Lopes Baratella da Cunha Camargo and Felipe de Paula Nogueira Cruz contributed to genome sequencing. Felipe de Paula Nogueira Cruz and Cristina Paiva de Sousa analyzed and interpreted data. Felipe de Paula Nogueira Cruz, Ailton Ferreira de Paula, Camila Tita Nogueira, and Paulo Henrique Marques de Andrade performed experiments. Felipe de Paula Nogueira Cruz, Paulo Teixeira Lacava, Ilana Lopes Baratella da Cunha Camargo, Leonardo Maurici Borges, Fernanda de Freitas Aníbal, and Cristina Paiva de Sousa approved the final version to be submitted.

Acknowledgments

This study was financially supported by National Council for Scientific and Technological Development (CNPq; 140125/2015-9) and São Paulo State Research Support Foundation (FAPESP) through CEPID Program—CIBFar Project (2013/07600-3 and 2019/04788-8) and the regular project (2016/13423-5).

Supplementary Materials

Supplementary Figure 1: consensus tree obtained from a neighbor-joining phylogenetic analysis using the Jukes-Cantor method (bootstrap with 1000 replicates) based on full length 16S rDNA gene of *B. cepacia* COPS strain compared to reference sequences of Bcc members. Supplementary Figure 2: consensus tree obtained from a neighbor-joining phylogenetic analysis using the Jukes-Cantor method (bootstrap with 1000 replicates) based on full length *atpD* gene of *B. cepacia* COPS strain compared to reference sequences of Bcc. Supplementary Figure 3: consensus tree obtained from a neighbor-joining phylogenetic analysis using the Jukes-Cantor method (bootstrap with 1000 replicates) based on full length *gltB* gene of *B. cepacia* COPS strain compared to reference sequences of Bcc. Supplementary Figure 4: consensus tree obtained from a neighbor-joining phylogenetic analysis using the Jukes-Cantor method (bootstrap with 1000 replicates) based on full length *gyrB* gene of *B. cepacia* COPS strain compared to reference sequences of Bcc. Supplementary Figure 5: consensus tree obtained from a neighbor-joining phylogenetic analysis using the Jukes-Cantor method (bootstrap with

1000 replicates) based on full length *lepA* gene of *B. cepacia* COPS strain compared to reference sequences of Bcc. Supplementary Figure 6: consensus tree obtained from a neighbor-joining phylogenetic analysis using the Jukes-Cantor method (bootstrap with 1000 replicates) based on full length *phaC* gene of *B. cepacia* COPS strain compared to reference sequences of Bcc members. Supplementary Figure 7: consensus tree obtained from a neighbor-joining phylogenetic analysis using the Jukes-Cantor method (bootstrap with 1000 replicates) based on full length *recA* gene of *B. cepacia* COPS strain compared to reference sequences of Bcc. Supplementary Figure 8: consensus tree obtained from a neighbor-joining phylogenetic analysis using the Jukes-Cantor method (bootstrap with 1000 replicates) based on full length *trpB* gene of *B. cepacia* COPS strain compared to reference sequences of Bcc. (Supplementary Materials)

References

- [1] P. M. Giang and H. Otsuka, "New compounds and potential candidates for drug discovery from medicinal plants of Vietnam," *Chemical and Pharmaceutical Bulletin*, vol. 66, no. 5, pp. 493–505, 2018.
- [2] O. C. Gómez and J. H. H. Luiz, "Endophytic fungi isolated from medicinal plants: future prospects of bioactive natural products from *Tabebuia/Handroanthus* endophytes," *Applied Microbiology and Biotechnology*, vol. 102, no. 21, pp. 9105–9119, 2018.
- [3] U. Anand, N. Jacobo-Herrera, A. Altemimi, and N. Lakhssassi, "A comprehensive review on medicinal plants as antimicrobial therapeutics: potential avenues of bio-compatible drug discovery," *Metabolites*, vol. 9, no. 11, p. 258, 2019.
- [4] E. Martínez-Klimova, K. Rodríguez-Peña, and S. Sánchez, "Endophytes as sources of antibiotics," *Biochemical Pharmacology*, vol. 134, pp. 1–17, 2017.
- [5] E. Ancheeva, G. Daletos, and P. Proksch, "Bioactive secondary metabolites from endophytic fungi," *Current Medicinal Chemistry*, vol. 27, no. 11, pp. 1836–1854, 2020.
- [6] L. M. Elias, D. Fortkamp, S. B. Sartori et al., "The potential of compounds isolated from *Xylaria* spp. as antifungal agents against anthracnose," *Brazilian Journal of Microbiology*, vol. 49, no. 4, pp. 840–847, 2018.
- [7] J. L. Azevedo, W. Maccheroni Jr., J. O. Pereira, and W. L. De Araújo, "Endophytic microorganisms: a review on insect control and recent advances on tropical plants," *Electronic Journal of Biotechnology*, vol. 3, pp. 15–16, 2000.
- [8] G. Strobel, B. Daisy, U. Castillo, and J. Harper, "Natural products from endophytic Microorganisms," *Journal of Natural Products*, vol. 67, no. 2, pp. 257–268, 2004.
- [9] D. Pacifico, A. Squartini, D. Crucitti et al., "The role of the endophytic microbiome in the grapevine response to environmental triggers," *Frontiers in Plant Science*, vol. 10, p. 1256, 2019.
- [10] F. L. P. Nogueira, S. B. O. Fernandes, G. M. Reis et al., "Atividade analgésica e anti-dematogênica de *Polygala paniculata* L. (Polygalaceae) selvagem e obtida por micro-propagação," *Revista Brasileira de Farmacognosia*, vol. 15, no. 4, pp. 310–315, 2005.
- [11] L. E. B. Bettio, D. G. Machado, M. P. Cunha et al., "Anti-depressant-like effect of extract from *Polygala paniculata*:

- involvement of the monoaminergic systems,” *Pharmaceutical Biology*, vol. 49, no. 12, pp. 1277–1285, 2011.
- [12] V. D. Frescura and H. D. Laughinghouse IV, T. S. do Canto-Dorow and S. B. Tedesco, Pollen viability of *Polygala paniculata* L. (Polygalaceae) using different staining methods,” *Biocell: Official Journal of the Sociedades Latinoamericanas de Microscopia Electronica*, vol. 36, no. 3, pp. 143–145, 2012.
- [13] M.-A. Lacaille-Dubois, C. Delaude, and A.-C. Mitaine-Offer, “A review on the phytopharmacological studies of the genus *Polygala*,” *Journal of Ethnopharmacology*, vol. 249, Article ID 112417, 2020.
- [14] B. Y. Jin and J. Park, “Studies on the alkaloidal components of *Polygala tenuifolia* willd,” *Zhongguo Zhong Yao Za Zhi*, vol. 18, no. 11, pp. 675–677, 1993.
- [15] S. Dall’Acqua, G. Innocenti, G. Viola, A. Piovan, R. Caniato, and E. M. Cappelletti, “Cytotoxic compounds from *Polygala vulgaris*,” *Chemical & Pharmaceutical Bulletin*, vol. 50, no. 11, pp. 1499–1501, 2002.
- [16] S. Dall’Acqua, G. Viola, E. M. Cappelletti, and G. Innocenti, “Xanthones from *Polygala alpestris* (Rchb.),” *Zeitschrift für Naturforschung C: A Journal of Biosciences*, vol. 59, no. 5–6, pp. 335–338, 2004.
- [17] T. Nagai, Y. Suzuki, H. Kiyohara et al., “Onjisaponins, from the root of *Polygala tenuifolia* Willdenow, as effective adjuvants for nasal influenza and diphtheria-pertussis-tetanus vaccines,” *Vaccine*, vol. 19, no. 32, pp. 4824–4834, 2001.
- [18] H. Jia, Y. Jiang, Y. Ruan et al., “Tenuigenin treatment decreases secretion of the Alzheimer’s disease amyloid β -protein in cultured cells,” *Neuroscience Letters*, vol. 367, no. 1, pp. 123–128, 2004.
- [19] M. Hamburger, M. Gupta, and K. Hostettmann, “Coumarins from *Polygala paniculata*,” *Planta Medica*, vol. 51, no. 3, pp. 215–217, 1985.
- [20] M.-H. Cheong, S.-R. Lee, H.-S. Yoo et al., “Anti-inflammatory effects of *Polygala tenuifolia* root through inhibition of NF- κ B activation in lipopolysaccharide-induced BV2 microglial cells,” *Journal of Ethnopharmacology*, vol. 137, no. 3, pp. 1402–1408, 2011.
- [21] F. Arruda-Silva, M. V. P. S. Nascimento, A. B. G. Luz et al., “*Polygala molluginifolia* A. St.-Hil. and Moq. prevent inflammation in the mouse pleurisy model by inhibiting NF- κ B activation,” *International Immunopharmacology*, vol. 19, no. 2, pp. 334–341, 2014.
- [22] Q. Cao, Y. Jiang, S.-Y. Cui et al., “Tenuifolin, a saponin derived from *Radix Polygalae*, exhibits sleep-enhancing effects in mice,” *Phytomedicine*, vol. 23, no. 14, pp. 1797–1805, 2016.
- [23] M. G. Pizzolatti, A. H. Koga, E. C. Grisard, and M. Steindel, “Trypanocidal activity of extracts from Brazilian Atlantic rain forest plant species,” *Phytomedicine*, vol. 10, no. 5, pp. 422–426, 2003.
- [24] C. Nucci-Martins, L. F. Nascimento, D. Venzke et al., “Antinociceptive effect of hydroalcoholic extract and isoflavone isolated from *Polygala molluginifolia* in mice: evidence for the involvement of opioid receptors and TRPV1 and TRPA1 channels,” *Phytomedicine*, vol. 23, no. 5, pp. 429–440, 2016.
- [25] C. Guo, J. Shen, Z. Meng, X. Yang, and F. Li, “Neuroprotective effects of polygalacic acid on scopolamine-induced memory deficits in mice,” *Phytomedicine*, vol. 23, no. 2, pp. 149–155, 2016.
- [26] X. B. Huang, Y. J. Chen, W. Q. Chen, N. Q. Wang, X. L. Wu, and Y. Liu, “Neuroprotective effects of tenuigenin on neurobehavior, oxidative stress, and tau hyperphosphorylation induced by intracerebroventricular streptozotocin in rats,” *Brain Circulation*, vol. 4, no. 1, pp. 24–32, 2018.
- [27] S. Li, Y. Sun, Z. Han, X. Bu, W. Yu, and J. Wang, “Retracted: cytoprotective effects of euxanthone against ox-LDL-induced endothelial cell injury is mediated via Nrf2,” *Life Sciences*, vol. 223, pp. 174–184, 2019.
- [28] L. Zhu, X. Liu, D. Li, S. Sun, Y. Wang, and X. Sun, “Retracted: autophagy is a pro-survival mechanism in ovarian cancer against the apoptotic effects of euxanthone,” *Biomedicine & Pharmacotherapy*, vol. 103, pp. 708–718, 2018.
- [29] J. Zou, Y. Wang, M. Liu et al., “Retracted: euxanthone inhibits glycolysis and triggers mitochondria-mediated apoptosis by targeting hexokinase 2 in epithelial ovarian cancer,” *Cell Biochemistry and Function*, vol. 36, no. 6, pp. 303–311, 2018.
- [30] S. Johann, B. G. Mendes, F. C. Missau, M. A. d. Resende, and M. G. Pizzolatti, “Antifungal activity of five species of *Polygala*,” *Brazilian Journal of Microbiology*, vol. 42, no. 3, pp. 1065–1075, 2011.
- [31] A. M. Caraballo-Rodríguez, P. C. Dorrestein, and M. T. Pupo, “Molecular inter-kingdom interactions of endophytes isolated from *Lychnophora ericoides*,” *Scientific Reports*, vol. 7, no. 1, p. 5373, 2017.
- [32] G. Vigliotta, D. Giordano, A. Verdino et al., “New compounds for a good old class: synthesis of two B-lactam bearing cephalosporins and their evaluation with a multidisciplinary approach,” *Bioorganic & Medicinal Chemistry*, vol. 28, no. 4, Article ID 115302, 2020.
- [33] K. C. Nicolaou and S. Rigol, “A brief history of antibiotics and select advances in their synthesis,” *The Journal of Antibiotics*, vol. 71, no. 2, pp. 153–184, 2018.
- [34] A. Matsumoto and Y. Takahashi, “Endophytic actinomycetes: promising source of novel bioactive compounds,” *The Journal of Antibiotics*, vol. 70, no. 5, pp. 514–519, 2017.
- [35] V. S. Brauer, C. P. Rezende, A. M. Pessoni et al., “Antifungal agents in agriculture: friends and foes of public health,” *Biomolecules*, vol. 9, no. 10, p. 521, 2019.
- [36] M. G. Cullen, L. J. Thompson, J. C. Carolan, J. C. Stout, and D. A. Stanley, “Fungicides, herbicides and bees: a systematic review of existing research and methods,” *PLoS One*, vol. 14, no. 12, Article ID e0225743, 2019.
- [37] O. I. Omomowo and O. O. Babalola, “Bacterial and fungal endophytes: tiny giants with immense beneficial potential for plant growth and sustainable agricultural productivity,” *Microorganisms*, vol. 7, no. 11, p. 481, 2019.
- [38] L. M. Alcântara, T. C. S. Ferreira, F. R. Gadelha, and D. C. Miguel, “Challenges in drug discovery targeting Tri-Tryp diseases with an emphasis on leishmaniasis,” *International Journal for Parasitology: Drugs and Drug Resistance*, vol. 8, no. 3, pp. 430–439, 2018.
- [39] A. A. Bekhit, E. El-Agroudy, A. Helmy, T. M. Ibrahim, A. Shavandi, and A. E.-D. A. Bekhit, “*Leishmania* treatment and prevention: natural and synthesized drugs,” *European Journal of Medicinal Chemistry*, vol. 160, pp. 229–244, 2018.
- [40] A. Cassini, L. D. Högberg, D. Plachouras et al., “Attributable deaths and disability-adjusted life-years caused by infections with antibiotic-resistant bacteria in the EU and the European economic area in 2015: a population-level modelling analysis,” *The Lancet Infectious Diseases*, vol. 19, no. 1, pp. 56–66, 2019.
- [41] S. Kunakom and A. S. Eustáquio, “Burkholderia as a source of natural products,” *Journal of Natural Products*, vol. 82, no. 7, pp. 2018–2037, 2019.

- [42] S.-E. Lu, J. Novak, F. W. Austin et al., "Occidiofungin, a unique antifungal glycopeptide produced by a strain of *Burkholderia contaminans*," *Biochemistry*, vol. 48, no. 35, pp. 8312–8321, 2009.
- [43] E. Depoorter, M. J. Bull, C. Peeters, T. Coenye, P. Vandamme, and E. Mahenthiralingam, "*Burkholderia*: an update on taxonomy and biotechnological potential as antibiotic producers," *Applied Microbiology and Biotechnology*, vol. 100, no. 12, pp. 5215–5229, 2016.
- [44] L. Song, M. Jenner, J. Masschelein et al., "Discovery and biosynthesis of gladiolin: a *Burkholderia gladioli* antibiotic with promising activity against *Mycobacterium tuberculosis*," *Journal of the American Chemical Society*, vol. 139, no. 23, pp. 7974–7981, 2017.
- [45] Q. Esmaeel, L. Miotto, M. Rondeau et al., "*Paraburkholderia phytofirmans* Ps]N-plants interaction: from perception to the induced mechanisms," *Frontiers in Microbiology*, vol. 9, p. 2093, 2018.
- [46] J. P. R. Furlan, A. Pitondo-Silva, V. S. Braz, I. F. L. Gallo, and E. G. Stehling, "Evaluation of different molecular and phenotypic methods for identification of environmental *Burkholderia cepacia* complex," *World Journal of Microbiology and Biotechnology*, vol. 35, no. 3, p. 39, 2019.
- [47] A. J. Mullins, J. A. H. Murray, M. J. Bull et al., "Genome mining identifies cepacin as a plant-protective metabolite of the biopesticidal bacterium *Burkholderia ambifaria*," *Nature Microbiology*, vol. 4, no. 6, pp. 996–1005, 2019.
- [48] S. Kunakom and A. S. Eustáquio, "Heterologous production of lasso peptide Capistrin in a *Burkholderia* host," *ACS Synthetic Biology*, vol. 9, no. 2, pp. 241–248, 2020.
- [49] T. Coenye, P. Vandamme, J. R. W. Govan, and J. J. LiPuma, "Taxonomy and identification of the *Burkholderia cepacia* complex," *Journal of Clinical Microbiology*, vol. 39, no. 10, pp. 3427–3436, 2001.
- [50] J. M. Janda and S. L. Abbott, "16S rRNA gene sequencing for bacterial identification in the diagnostic laboratory: pluses, perils, and pitfalls," *Journal of Clinical Microbiology*, vol. 45, no. 9, pp. 2761–2764, 2007.
- [51] M. Martinucci, E. Roschetto, V. D. Iula, A. Votsi, M. R. Catania, and E. De Gregorio, "Accurate identification of members of the *Burkholderia cepacia* complex in cystic fibrosis sputum," *Letters in Applied Microbiology*, vol. 62, no. 3, pp. 221–229, 2016.
- [52] E. Bach, F. H. Sant'Anna, J. F. Magrich Dos Passos et al., "Detection of misidentifications of species from the *Burkholderia cepacia* complex and description of a new member, the soil bacterium *Burkholderia catarinensis* sp. nov.," *Pathogens and Disease*, vol. 75, no. 6, p. 75, 2017.
- [53] P. Martina, M. Leguizamón, C. I. Prieto et al., "*Burkholderia puraquae* sp. nov., a novel species of the *Burkholderia cepacia* complex isolated from hospital settings and agricultural soils," *International Journal of Systematic and Evolutionary Microbiology*, vol. 68, no. 1, pp. 14–20, 2018.
- [54] D. Godoy, G. Randle, A. J. Simpson et al., "Multilocus sequence typing and evolutionary relationships among the causative agents of melioidosis and glanders, *Burkholderia pseudomallei* and *Burkholderia mallei*," *Journal of Clinical Microbiology*, vol. 41, no. 5, pp. 2068–2079, 2003.
- [55] T. Spilker, A. Baldwin, A. Bumford, C. G. Dowson, E. Mahenthiralingam, and J. J. LiPuma, "Expanded multilocus sequence typing for *Burkholderia* species," *Journal of Clinical Microbiology*, vol. 47, no. 8, pp. 2607–2610, 2009.
- [56] P. Estrada-de los Santos, P. Vinuesa, L. Martínez-Aguilar, A. M. Hirsch, and J. Caballero-Mellado, "Phylogenetic analysis of *Burkholderia* species by multilocus sequence analysis," *Current Microbiology*, vol. 67, no. 1, pp. 51–60, 2013.
- [57] V. Gautam, P. P. Patil, S. Kumar et al., "Multilocus sequence analysis reveals high genetic diversity in clinical isolates of *Burkholderia cepacia* complex from India," *Scientific Reports*, vol. 6, no. 1, Article ID 35769, 2016.
- [58] E. P. Price, B. MacHunter, B. G. Spratt, D. M. Wagner, B. J. Currie, and D. S. Sarovich, "Improved multilocus sequence typing of *Burkholderia pseudomallei* and closely related species," *Journal of Medical Microbiology*, vol. 65, no. 9, pp. 992–997, 2016.
- [59] E. Birnie, S. van't Hof, A. Bijnisdorp et al., "Identification of *Burkholderia thailandensis* with novel genotypes in the soil of central Sierra Leone," *PLoS Neglected Tropical Diseases*, vol. 13, no. 6, Article ID e0007402, 2019.
- [60] X. Wang, X. Zheng, M. Huang, and L. Liu, "A comparative genomic analysis of small-colony variant and wild-type *Burkholderia pseudomallei* in a patient with bacterial liver abscess," *Journal of Global Antimicrobial Resistance*, vol. 21, pp. 16–21, 2020.
- [61] X. Zhu, H. Chen, S. Li et al., "Molecular characteristics of *Burkholderia pseudomallei* collected from humans in Hainan, China," *Frontiers in Microbiology*, vol. 11, p. 778, 2020.
- [62] C. Linnaeus, *Systema Naturae*, vol. 2p. 1154, 10th edition, 1759.
- [63] M. C. M. Marques and K. Gomes, "Polygalaceae in Wanderley," in *Flora Fanerogâmica do Estado de São Paulo*, M. G. L. Wanderley, G. J. Shepherd, and A. M. Giulietti, Eds., vol. 2, pp. 229–259, Instituto de Botânica, São Paulo, Brazil, 2002.
- [64] W. L. Araújo, M. C. Quecine, P. T. Lacava et al., *Microorganismos Endofíticos: Aspectos Teóricos e Práticos de Isolamento e Caracterização*, UFOPA, Santarém, Brazil, 2014.
- [65] A. C. Bogas, A. J. Ferreira, W. L. Araújo et al., "Endophytic bacterial diversity in the phyllosphere of Amazon *Paullinia cupana* associated with asymptomatic and symptomatic anthracnose," *Springerplus*, vol. 4, no. 1, p. 258, 2015.
- [66] F. D. Andreote, R. Mendes, F. Dini-Andreote et al., "Transgenic tobacco revealing altered bacterial diversity in the rhizosphere during early plant development," *Antonie Van Leeuwenhoek*, vol. 93, no. 4, pp. 415–424, 2008.
- [67] F. U. Rojas-Rojas, A. Salazar-Gómez, M. E. Vargas-Díaz et al., "Broad-spectrum antimicrobial activity by *Burkholderia cenocepacia* TAtl-371, a strain isolated from the tomato rhizosphere," *Microbiology*, vol. 164, no. 9, pp. 1072–1086, 2018.
- [68] M. A. Kurnianto, H. D. Kusumaningrum, and H. N. Lioe, "Characterization of *Streptomyces* isolates associated with estuarine fish *Chanos chanos* and profiling of their antibacterial metabolites-crude-extract," *International Journal of Microbiology*, vol. 2020, Article ID 8851947, 12 pages, 2020.
- [69] E. B. Shirling and D. Gottlieb, "Methods for characterization of *Streptomyces* species," *International Journal of Systematic Bacteriology*, vol. 16, no. 3, pp. 313–340, 1966.
- [70] E. N. Quiroga, A. R. Sampietro, and M. A. Vattuone, "Screening antifungal activities of selected medicinal plants," *Journal of Ethnopharmacology*, vol. 74, no. 1, pp. 89–96, 2001.
- [71] M. C. S. e. Silva, J. C. Polonio, M. C. Quecine et al., "Endophytic cultivable bacterial community obtained from the *Paullinia cupana* seed in Amazonas and Bahia regions and its antagonistic effects against *Colletotrichum gloeosporioides*," *Microbial Pathogenesis*, vol. 98, pp. 16–22, 2016.

- [72] V. Specian, A. T. Costa, A. C. Felber, J. C. Polonio, J. L. Azevedo, and J. A. Pamphile, "Molecular phylogeny and biotechnological potential of bacterial endophytes associated with *Malpighia emarginata*," *Genetics and Molecular Research*, vol. 15, no. 2, p. 15, 2016.
- [73] S. R. Park, A. Tripathi, J. Wu et al., "Discovery of cahuitamycins as biofilm inhibitors derived from a convergent biosynthetic pathway," *Nature Communications*, vol. 7, no. 1, Article ID 10710, 2016.
- [74] Clinical and Laboratory Standards Institute (CLSI), *Performance Standards for Antimicrobial Susceptibility Testing*, Clinical and Laboratory Standard Institute, Wayne, PA, USA, 28th edition, 2018.
- [75] K. Okonechnikov, O. Golosova, and M. Fursov, "Unipro UGENE: a unified bioinformatics toolkit," *Bioinformatics*, vol. 28, no. 8, pp. 1166-1167, 2012.
- [76] A. M. Bolger, M. Lohse, and B. Usadel, "Trimmomatic: a flexible trimmer for Illumina sequence data," *Bioinformatics*, vol. 30, no. 15, pp. 2114-2120, 2014.
- [77] A. Bankevich, S. Nurk, D. Antipov et al., "SPAdes: a new genome assembly algorithm and its applications to single-cell sequencing," *Journal of Computational Biology*, vol. 19, no. 5, pp. 455-477, 2012.
- [78] A. Gurevich, V. Saveliev, N. Vyahhi, and G. Tesler, "QUAST: quality assessment tool for genome assemblies," *Bioinformatics*, vol. 29, no. 8, pp. 1072-1075, 2013.
- [79] T. Seemann, "Prokka: rapid prokaryotic genome annotation," *Bioinformatics*, vol. 30, no. 14, pp. 2068-2069, 2014.
- [80] R. K. Aziz, D. Bartels, A. A. Best et al., "The RAST server: rapid annotations using subsystems technology," *BMC Genomics*, vol. 9, no. 1, p. 75, 2008.
- [81] M. Galardini, E. G. Biondi, M. Bazzicalupo, and A. Mengoni, "CONTIGuator: a bacterial genomes finishing tool for structural insights on draft genomes," *Source Code for Biology and Medicine*, vol. 6, no. 1, p. 11, 2011.
- [82] K. Lagesen, P. F. Hallin, E. Rødland, H. H. Stærfeldt, T. Rognes, and D. W. Ussery, "RNAmmer: Consistent annotation of rRNA genes in genomic sequences," *Nucleic Acids Research*, vol. 35, no. 9, pp. 3100-3108, 2007.
- [83] S. Kumar, G. Stecher, M. Li, C. Knyaz, and K. Tamura, "Mega X: molecular evolutionary genetics analysis across computing platforms," *Molecular Biology and Evolution*, vol. 35, no. 6, pp. 1547-1549, 2018.
- [84] N. Saitou and M. Nei, "The neighbor-joining method: a new method for reconstructing phylogenetic trees," *Molecular Biology and Evolution*, vol. 4, no. 4, pp. 406-425, 1987.
- [85] K. Tamura, M. Nei, and S. Kumar, "Prospects for inferring very large phylogenies by using the neighbor-joining method," *Proceedings of the National Academy of Sciences*, vol. 101, no. 30, pp. 11030-11035, 2004.
- [86] S. Kurtz, A. Phillippy, A. L. Delcher et al., "Versatile and open software for comparing large genomes," *Genome Biology*, vol. 5, no. 2, p. R12, 2004.
- [87] J. Goris, K. T. Konstantinidis, J. A. Klappenbach, T. Coenye, P. Vandamme, and J. M. Tiedje, "DNA-DNA hybridization values and their relationship to whole-genome sequence similarities," *International Journal of Systematic and Evolutionary Microbiology*, vol. 57, no. 1, pp. 81-91, 2007.
- [88] C. Camacho, G. Coulouris, V. Avagyan et al., "BLAST+: architecture and applications," *BMC Bioinformatics*, vol. 10, no. 1, p. 421, 2009.
- [89] H. Teeling, A. Meyerdierks, M. Bauer, R. Amann, and F. O. Glöckner, "Application of tetranucleotide frequencies for the assignment of genomic fragments," *Environmental Microbiology*, vol. 6, no. 9, pp. 938-947, 2004.
- [90] M. Richter and R. Rosselló-Móra, "Shifting the genomic gold standard for the prokaryotic species definition," *Proceedings of the National Academy of Sciences*, vol. 106, no. 45, pp. 19126-19131, 2009.
- [91] M. Richter, R. Rosselló-Móra, F. Oliver Glöckner, and J. Peplies, "JSpeciesWS: a web server for prokaryotic species circumscription based on pairwise genome comparison," *Bioinformatics*, vol. 32, no. 6, pp. 929-931, 2016.
- [92] J. P. Meier-Kolthoff, A. F. Auch, H.-P. Klenk, and M. Göker, "Genome sequence-based species delimitation with confidence intervals and improved distance functions," *BMC Bioinformatics*, vol. 14, no. 1, p. 60, 2013.
- [93] J. P. Meier-Kolthoff, H.-P. Klenk, and M. Göker, "Taxonomic use of DNA G+C content and DNA-DNA hybridization in the genomic age," *International Journal of Systematic and Evolutionary Microbiology*, vol. 64, no. 2, pp. 352-356, 2014.
- [94] S. Cosentino, M. Voldby Larsen, F. Møller Aarestrup, and O. Lund, "PathogenFinder—distinguishing friend from foe using bacterial whole genome sequence data," *PLoS One*, vol. 8, no. 10, Article ID e77302, 2013.
- [95] E. Zankari, H. Hasman, S. Cosentino et al., "Identification of acquired antimicrobial resistance genes," *Journal of Antimicrobial Chemotherapy*, vol. 67, no. 11, pp. 2640-2644, 2012.
- [96] V. Bortolaia, R. S. Kaas, E. Ruppe et al., "ResFinder 4.0 for predictions of phenotypes from genotypes," *Journal of Antimicrobial Chemotherapy*, vol. 75, no. 12, p. 3491, 2020.
- [97] C. Paungfoo-Lonhienne, T. G. A. Lonhienne, Y. K. Yeoh et al., "Crosstalk between sugarcane and a plant-growth promoting *Burkholderia* species," *Scientific Reports*, vol. 6, no. 1, p. 37389, 2016.
- [98] T. T. Nguyen, H.-H. Lee, J. Park, I. Park, and Y.-S. Seo, "Computational identification and comparative analysis of secreted and transmembrane proteins in six *Burkholderia* species," *The Plant Pathology Journal*, vol. 33, no. 2, pp. 148-162, 2017.
- [99] M. Mannaa, I. Park, and Y.-S. Seo, "Genomic features and insights into the taxonomy, virulence, and benevolence of plant-associated *Burkholderia* species," *International Journal of Molecular Sciences*, vol. 20, no. 1, p. 121, 2018.
- [100] R. Mendes, A. A. Pizzirani-Kleiner, W. L. Araujo, and J. M. Raaijmakers, "Diversity of cultivated endophytic bacteria from sugarcane: genetic and biochemical characterization of *Burkholderia cepacia* complex isolates," *Applied and Environmental Microbiology*, vol. 73, no. 22, pp. 7259-7267, 2007.
- [101] K. Takeshita and Y. Kikuchi, "Genomic comparison of insect gut symbionts from divergent *Burkholderia* subclades," *Genes*, vol. 11, no. 7, p. 744, 2020.
- [102] M. Tavares, M. Kozak, A. Balola, and I. Sá-Correia, "*Burkholderia cepacia* complex bacteria: a feared contamination risk in water-based pharmaceutical products," *Clinical Microbiology Reviews*, vol. 33, no. 3, pp. e00139-19, 2020.
- [103] P. Estrada-de Los Santos, M. Palmer, B. Chávez-Ramírez et al., "Whole genome analyses suggests that *Burkholderia sensu lato* contains two additional novel genera (mycetohabitans gen. Nov., and Trinickia gen. Nov.): implications for the evolution of diazotrophy and nodulation in the burkholderiaceae," *Genes*, vol. 9, no. 8, p. 389, 2018.
- [104] F. J. Vicenzi, M. Pillonetto, H. A. P. H. d. M. d. Souza et al., "Polyphasic characterisation of *Burkholderia cepacia* complex species isolated from children with cystic fibrosis,"

- Memórias do Instituto Oswaldo Cruz*, vol. 111, no. 1, pp. 37–42, 2016.
- [105] Y. Jin, J. Zhou, J. Zhou et al., “Genome-based classification of *Burkholderia cepacia* complex provides new insight into its taxonomic status,” *Biology Direct*, vol. 15, no. 1, p. 6, 2020.
- [106] N. K. D. Ragupathi and B. Veeraraghavan, “Accurate identification and epidemiological characterization of *Burkholderia cepacia* complex: an update,” *Annals of Clinical Microbiology and Antimicrobials*, vol. 18, no. 1, p. 7, 2019.
- [107] Y. Fang, Z. Hu, H. Chen et al., “Multilocus sequencing-based evolutionary analysis of 52 strains of *Burkholderia pseudomallei* in Hainan, China,” *Epidemiology and Infection*, vol. 147, pp. 1–6, 2018.
- [108] S. Tagele, S. Kim, H. Lee, and Y. Lee, “Potential of novel sequence type of *Burkholderia cenocepacia* for biological control of root rot of maize (*Zea mays* L.) caused by *Fusarium temperatum*,” *International Journal of Molecular Sciences*, vol. 20, no. 5, p. 1005, 2019.
- [109] K. J. Romero-Gutiérrez, M. N. Dourado, L. M. Garrido et al., “Phenotypic traits of *Burkholderia* spp. associated with ecological adaptation and plant-host interaction,” *Microbiological Research*, vol. 236, Article ID 126451, 2020.
- [110] E. Bach, G. D. d. S. Seger, G. d. C. Fernandes, B. B. Lisboa, and L. M. P. Passaglia, “Evaluation of biological control and rhizosphere competence of plant growth promoting bacteria,” *Applied Soil Ecology*, vol. 99, pp. 141–149, 2016.
- [111] P. M. L. Coulon, M.-C. Groleau, and E. Déziel, “Potential of the *Burkholderia cepacia* complex to produce 4-Hydroxy-3-Methyl-2-Alkylquinolines,” *Frontiers in Cellular and Infection Microbiology*, vol. 9, p. 33, 2019.
- [112] Y. S. Keum, Y. J. Lee, Y. H. Lee, and J. H. Kim, “Effects of nutrients on quorum signals and secondary metabolite productions of *Burkholderia* sp. O33,” *Journal of Microbiology and Biotechnology*, vol. 19, no. 10, pp. 1142–1149, 2009.
- [113] C. S. Quan, W. Zheng, Q. Liu, Y. Ohta, and S. D. Fan, “Isolation and characterization of a novel *Burkholderia cepacia* with strong antifungal activity against *Rhizoctonia solani*,” *Applied Microbiology and Biotechnology*, vol. 72, no. 6, pp. 1276–1284, 2006.
- [114] E. Simonetti, I. N. Roberts, M. S. Montecchia, F. H. Gutierrez-Boem, F. M. Gomez, and J. A. Ruiz, “A novel *Burkholderia ambifaria* strain able to degrade the mycotoxin fusaric acid and to inhibit *Fusarium* spp. growth,” *Microbiological Research*, vol. 206, pp. 50–59, 2018.
- [115] X. Liu, H. Zhu, S. Biswas, and Y.-Q. Cheng, “Improved production of cytotoxic thailanstatins A and D through metabolic engineering of *Burkholderia thailandensis* MSMB43 and pilot scale fermentation,” *Synthetic and Systems Biotechnology*, vol. 1, no. 1, pp. 34–38, 2016.
- [116] S. Le Guillouzer, M.-C. Groleau, and E. Déziel, “The complex quorum sensing circuitry of *Burkholderia thailandensis* is both hierarchically and homeostatically organized,” *mBio*, vol. 8, no. 6, p. 17, Article ID e01861, 2017.
- [117] C. Jenul, S. Sieber, C. Daepfen et al., “Biosynthesis of fragin is controlled by a novel quorum sensing signal,” *Nature Communications*, vol. 9, no. 1, p. 1297, 2018.
- [118] R. C. Orlandelli, T. T. d. Almeida, R. N. Alberto, J. C. Polonio, J. L. Azevedo, and J. A. Pamphile, “Antifungal and proteolytic activities of endophytic fungi isolated from *Piper hispidum* Sw,” *Brazilian Journal of Microbiology*, vol. 46, no. 2, pp. 359–366, 2015.
- [119] L. W. Meinhardt, J. Rincones, B. A. Bailey et al., “*Moniliophthora perniciosa*, the causal agent of witches’ broom disease of cacao: what’s new from this old foe?” *Molecular Plant Pathology*, vol. 9, no. 5, pp. 577–588, 2008.
- [120] E. C. dos Santos, C. P. Pirovani, S. C. Correa, F. Micheli, and K. P. Gramacho, “The pathogen *Moniliophthora perniciosa* promotes differential proteomic modulation of cacao genotypes with contrasting resistance to witches’ broom disease,” *BMC Plant Biology*, vol. 20, no. 1, p. 1, 2020.
- [121] K. B. de Almeida Lopes, V. Carpentieri-Pipolo, D. Fira et al., “Screening of bacterial endophytes as potential biocontrol agents against soybean diseases,” *Journal of Applied Microbiology*, vol. 125, no. 5, pp. 1466–1481, 2018.
- [122] D.-L. Zhao, D. Wang, X.-Y. Tian, F. Cao, Y.-Q. Li, and C.-S. Zhang, “Anti-phytopathogenic and cytotoxic activities of crude extracts and secondary metabolites of marine-derived fungi,” *Marine Drugs*, vol. 16, no. 1, p. 36, 2018.
- [123] J. M. Rajwade, R. G. Chikte, and K. M. Paknikar, “Nanomaterials: new weapons in a crusade against phytopathogens,” *Applied Microbiology and Biotechnology*, vol. 104, no. 4, p. 1437, 2020.
- [124] J. Hubert, C. Fourrier, D. Laplace, and R. Ioos, “First report of pineapple black rot caused by *Ceratocystis paradoxa* on *Ananas comosus* in French guiana,” *Plant Disease*, vol. 98, no. 11, p. 1584, 2014.
- [125] L. C. d. L. Fávoro, F. L. d. S. Sebastianes, and W. L. Araújo, “*Epicoccum nigrum* P16, a sugarcane endophyte, produces antifungal compounds and induces root growth,” *PLoS One*, vol. 7, no. 6, Article ID e36826, 2012.
- [126] A. P. D. da Silveira, R. d. P. F. Iório, F. C. C. Marcos et al., “Exploitation of new endophytic bacteria and their ability to promote sugarcane growth and nitrogen nutrition,” *Antonie Van Leeuwenhoek*, vol. 112, no. 2, pp. 283–295, 2019.
- [127] X. Niu, M. Pei, C. Liang et al., “Genetic transformation and green fluorescent protein labeling in *Ceratocystis paradoxa* from coconut,” *International Journal of Molecular Sciences*, vol. 20, no. 10, p. 2387, 2019.
- [128] M. Thompson and M. Raizada, “Fungal pathogens of maize gaining free passage along the silk road,” *Pathogens*, vol. 7, no. 4, p. 81, 2018.
- [129] A. Al-Hatmi, G. S. de Hoog, and J. F. Meis, “Multiresistant *Fusarium* pathogens on plants and humans: solutions in (from) the antifungal pipeline?” *Infection and Drug Resistance*, vol. 12, pp. 3727–3737, 2019.
- [130] D. R. Alves, S. M. Morais, F. Tomiotto-Pellissier et al., “Leishmanicidal and fungicidal activity of lipases obtained from endophytic fungi extracts,” *PLoS One*, vol. 13, no. 6, Article ID e0196796, 2018.
- [131] Z. Hrydziuszko, D. J. Strub, K. Labus, and J. Bryjak, “*Burkholderia cepacia* lipase immobilization for hydrolytic reactions and the kinetic resolution of the non-equimolar mixtures of isomeric alcohols,” *Bioorganic Chemistry*, vol. 93, Article ID 102745, 2019.
- [132] J. A. L. Lindoso, J. M. L. Costa, I. T. Queiroz, and H. Goto, “Review of the current treatments for leishmaniasis,” *Research and Reports in Tropical Medicine*, vol. 3, pp. 69–77, 2012.
- [133] E. S. Elkhayat, S. R. Ibrahim, G. A. Mohamed, and S. A. Ross, “Terrenolide S, a new antileishmanial butenolide from the endophytic fungus *Aspergillus terreus*,” *Natural Product Research*, vol. 30, no. 7, pp. 814–820, 2016.
- [134] T. T. de Almeida, M. A. D. S. Ribeiro, J. C. Polonio et al., “Curvulin and spirostaphylotrichins R and U from extracts produced by two endophytic *Bipolaris* sp. associated to aquatic macrophytes with antileishmanial activity,” *Natural Product Research*, vol. 32, no. 23, pp. 2783–2790, 2018.

- [135] L. Rahman, Z. K. Shinwari, I. Iqar, L. Rahman, and F. Tanveer, "An assessment on the role of endophytic microbes in the therapeutic potential of *Fagonia indica*," *Annals of Clinical Microbiology and Antimicrobials*, vol. 16, no. 1, p. 53, 2017.
- [136] R. M. K. Toghueo, "Anti-leishmanial and anti-inflammatory agents from endophytes: a review," *Natural Products and Bioprospecting*, vol. 9, no. 5, pp. 311–328, 2019.
- [137] S. L. Kandel, A. Firrincieli, P. M. Joubert et al., "An *In vitro* study of biocontrol and plant growth promotion potential of *Salicaceae* endophytes," *Frontiers in Microbiology*, vol. 8, p. 386, 2017.
- [138] R. Chaudhary, M. Balhara, D. Jangir et al., "The *Sesamum indicum* rhizosphere associated bacterium: a source of antifungal compound," *Current Topics in Medicinal Chemistry*, vol. 18, no. 1, pp. 88–97, 2018.
- [139] K. Durairaj, P. Velmurugan, J. H. Park et al., "Characterization and assessment of two biocontrol bacteria against *Pseudomonas syringae* wilt in *Solanum lycopersicum* and its genetic responses," *Microbiological Research*, vol. 206, pp. 43–49, 2018.